

Mid-Atlantic Traffic Incident Management Training Facility Feasibility Study

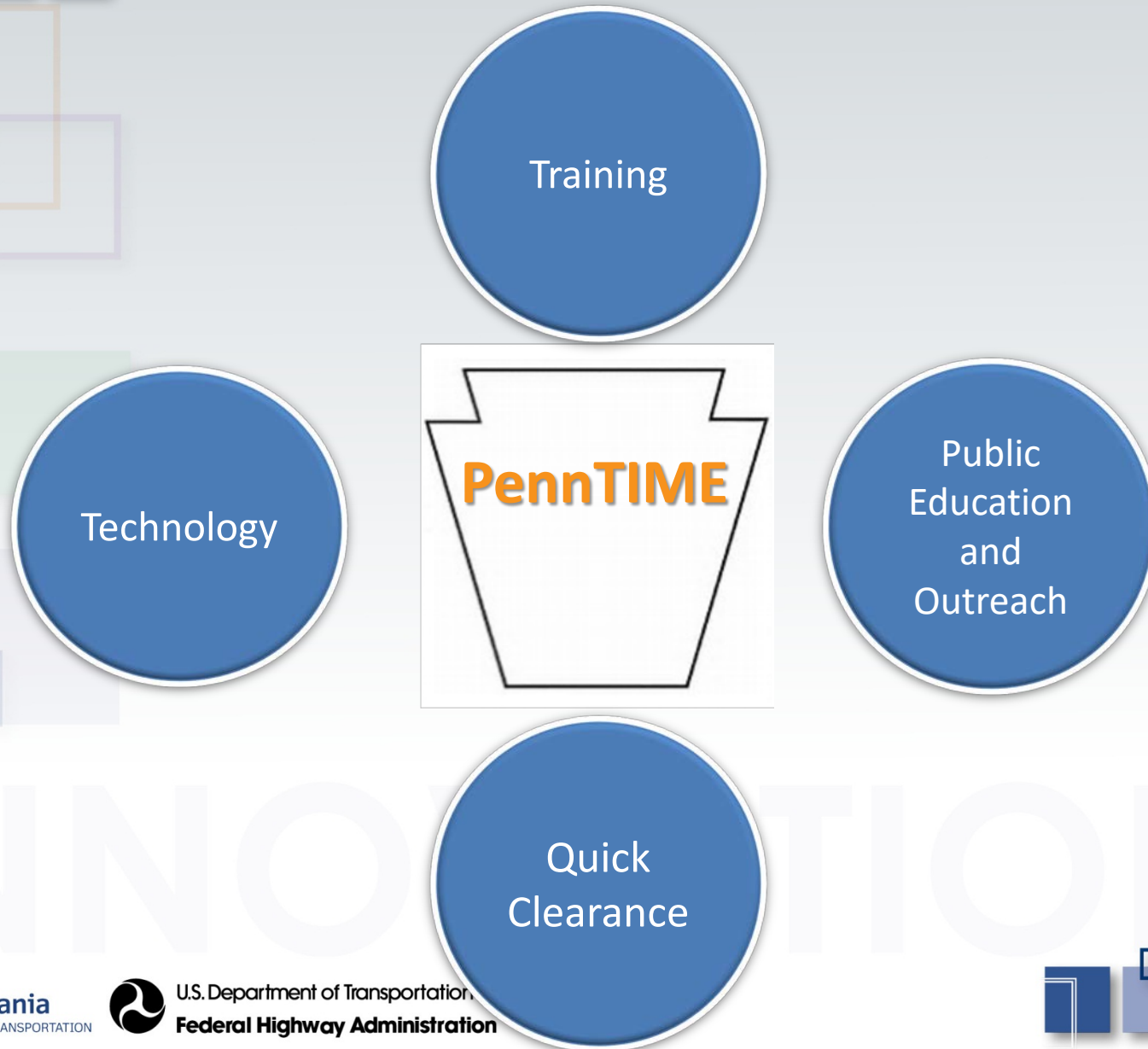


2017 Transportation Engineering & Safety Conference

December 8, 2017

Troy D. Truax, AICP

Michael Baker International



Purpose and Need

- Evaluate the need and demand for a PA-based Mid-Atlantic TIM Training Facility
- Centrally located facility offering:
 - Hands-on, multi-agency and multi-disciplinary TIM training
 - Certified TIM training for partners across the Mid-Atlantic region
 - Simulated environment with a variety of incident scenarios
 - Innovative technologies and equipment testing related to roadway safety



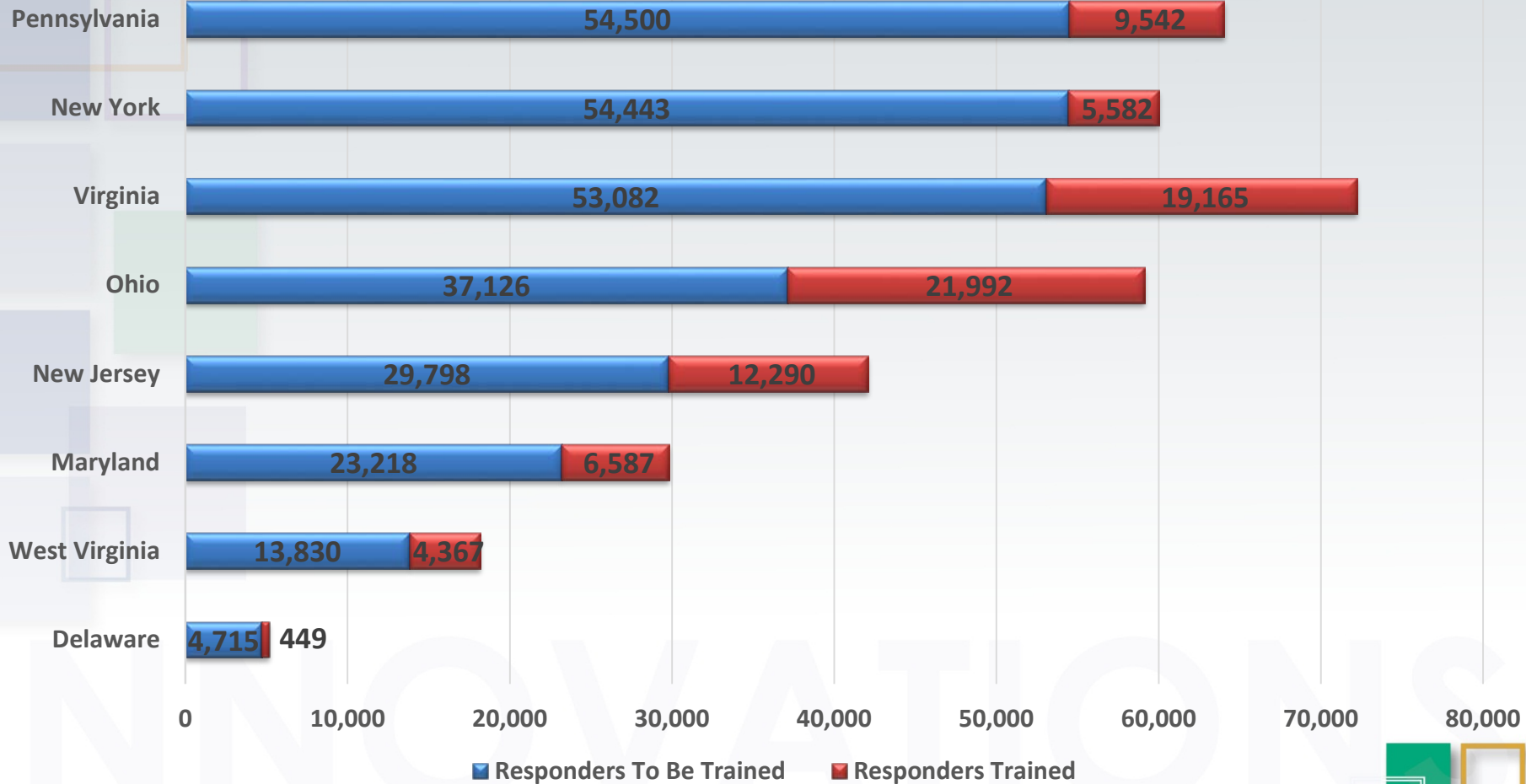
1,178,022

***Total Number of Responders
to be Trained Nationwide!***

Source: FHWA, July 10, 2017

MID-ATLANTIC TIM TRAINING FACILITY STUDY

Responders: Trained and to-be-Trained



Source: FHWA National Traffic Incident Management Responder Training Program, July 10, 2017

Project Scope



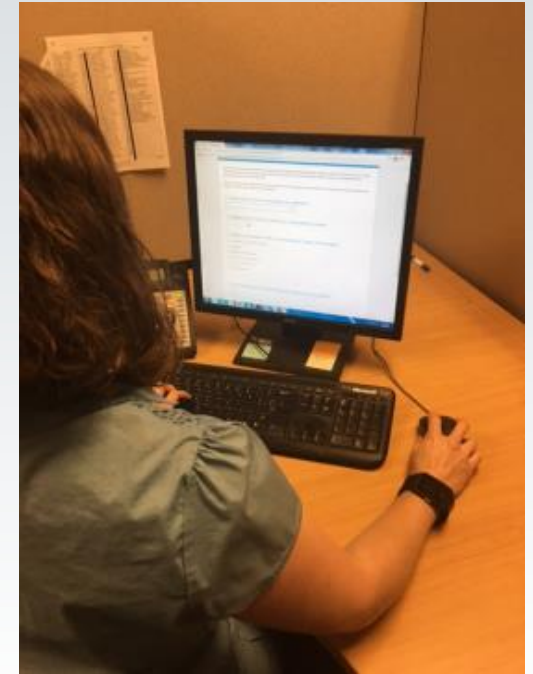
Stakeholder Engagement

- Federal and State Agencies
- Planning Partners - MPOs/RPOs
- County and Local Governments
- TIM Partners/Experts
- Corridor Coalitions
- Safety Organizations
- Technology Partners
- Work Zone Safety
- Education Institutions

January 4, 2017	PTC, PennDOT, and FHWA Joint Agency
April 19, 2017	PennTIME Meeting
May 9, 2017	PA Fire Commissioner
May 15, 2017	PA Fire Commissioner and PennDOT Incident Management
June 1, 2017	DVRPC Regional TIM Meeting
June 7, 2017	ResponderSafety.com Meeting
June 14, 2017	SPC Regional TIM Meeting
August 2, 2017	TN TIM Training Facility Evaluation
August 4, 2017	PSU Larson Transportation Institute
October 10, 2017	E-ZPass Executive Management Committee
November 8, 2017	State Transportation Innovation Council

Online Surveys

- Survey #1
 - Target Audience = First Responders
 - 851 responses
- Survey #2
 - Target Audiences = Technology, Work Zone, Commercial Vehicles
 - 93 responses
 - Conducting follow-ups with particular technology entities



Facility Characteristics

- Highway/roadway design to simulate real TIM conditions
- Integration of innovative technologies and equipment
- Supporting indoor training classrooms/labs
- Easily accessible from major transportation networks
- Located near supporting amenities



Real Life Training Simulations

TECHNICAL TRAINING ELEMENTS

Traffic Incident Management

ITS Technologies

- Tolling Technology
- Connected Automated Vehicles
- Unmanned Aerial Vehicles (Drones)

Construction/Work Zone Safety

Commercial Vehicles

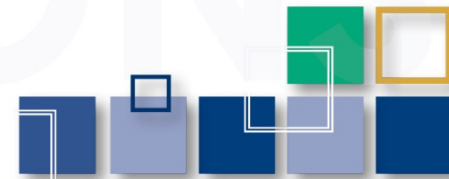
TARGET AUDIENCES

Law Enforcement
Fire/Rescue
EMS
Towing & Recovery
Public Works
Utilities

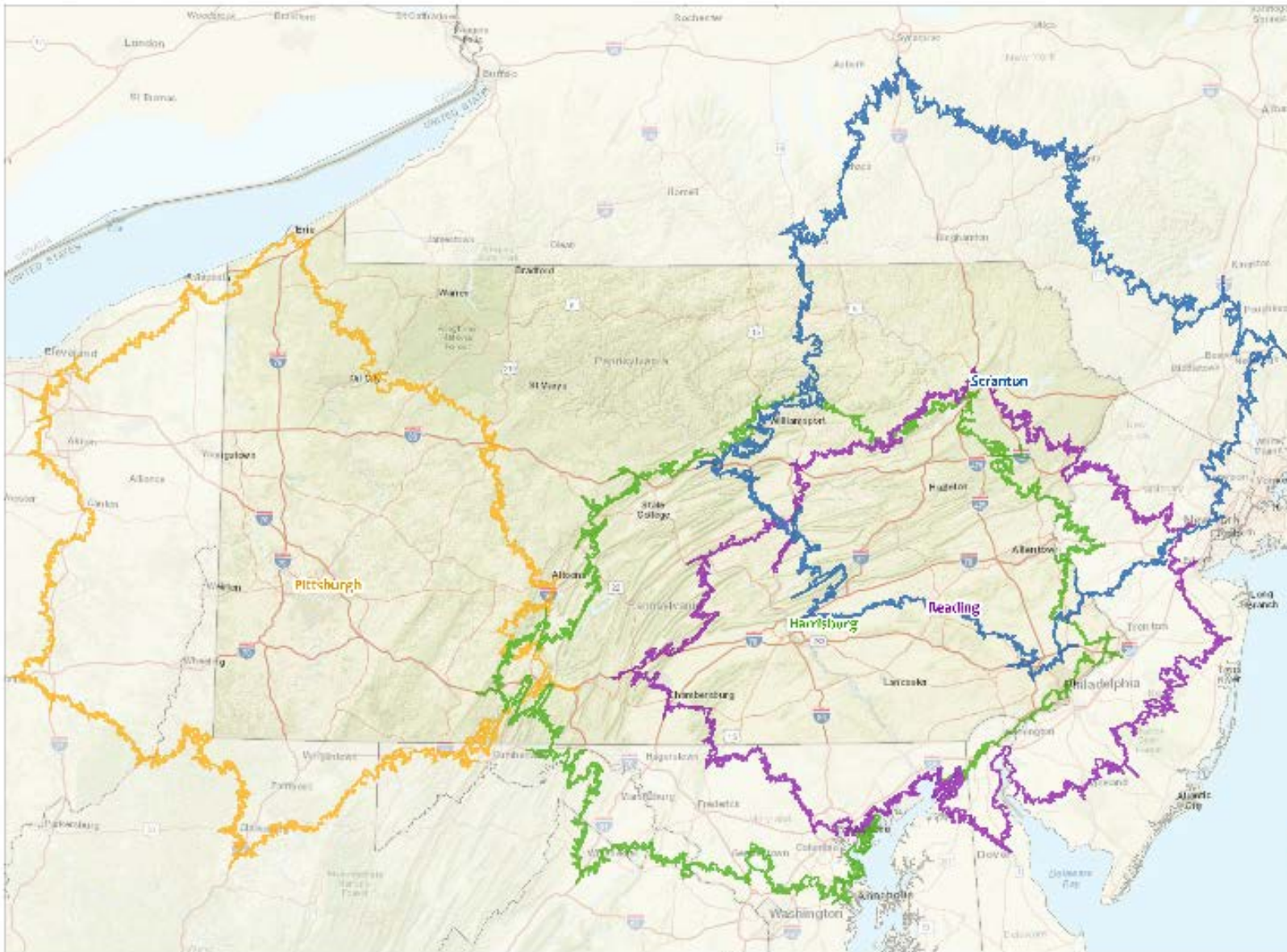
Tolling Agencies
Tolling Technology Vendors
Research Institutions
Industry Associations/Coalitions
State ITS

OSHA and ANSI Work Zone Safety Training
Contractors
Flagger Force

Motor Truck Carrier Associations
Bus Associations
Manufacturers
Integrators

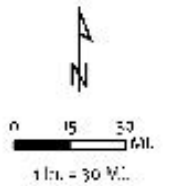


MID-ATLANTIC TIM TRAINING FACILITY STUDY



Mid-Atlantic Traffic Incident Management Training Facility Feasibility Study Drive Time Analysis for Fire Departments

Two Hour Drive Time Analysis
Pittsburgh
Harrisburg
Scranton
Reading



Michael Baker INTERNATIONAL

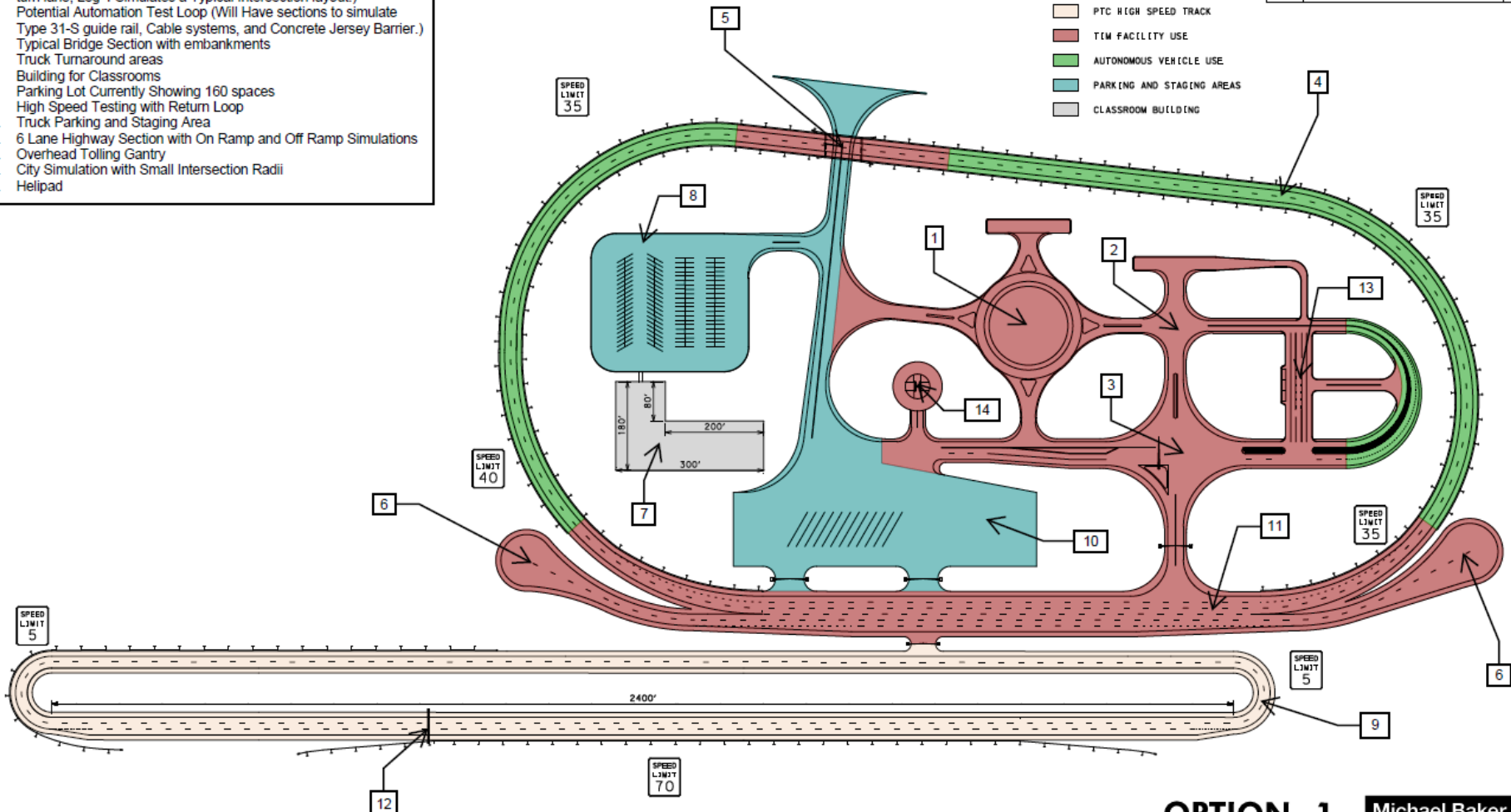
McCORMICK TAYLOR

MID-ATLANTIC TIM TRAINING FACILITY STUDY

DISTRICT	COUNTY	ROUTE	SECTION	SHEET
X-X	XXXX	XXXX	XXX	OF XX
XXXXXXXXXX				
REVISION NUMBER	REVISIONS	DATE	BY	

1. 4 Point Roundabout with area for Green Space
2. Rural Intersection
3. Urban 4 Point Intersection (Leg 1 Simulates Multilane through with Left turn lane and concrete island, Leg 2 Simulates Concrete Median, Leg 3 Simulates Multilane through with no additional left turn lane, Leg 4 Simulates a Typical Intersection layout.)
4. Potential Automation Test Loop (Will Have sections to simulate Type 31-S guide rail, Cable systems, and Concrete Jersey Barrier.)
5. Typical Bridge Section with embankments
6. Truck Turnaround areas
7. Building for Classrooms
8. Parking Lot Currently Showing 160 spaces
9. High Speed Testing with Return Loop
10. Truck Parking and Staging Area
11. 6 Lane Highway Section with On Ramp and Off Ramp Simulations
12. Overhead Tolling Gantry
13. City Simulation with Small Intersection Radii
14. Heliport






- PTC HIGH SPEED TRACK
- TIM FACILITY USE
- AUTONOMOUS VEHICLE USE
- PARKING AND STAGING AREAS
- CLASSROOM BUILDING

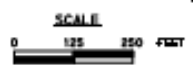
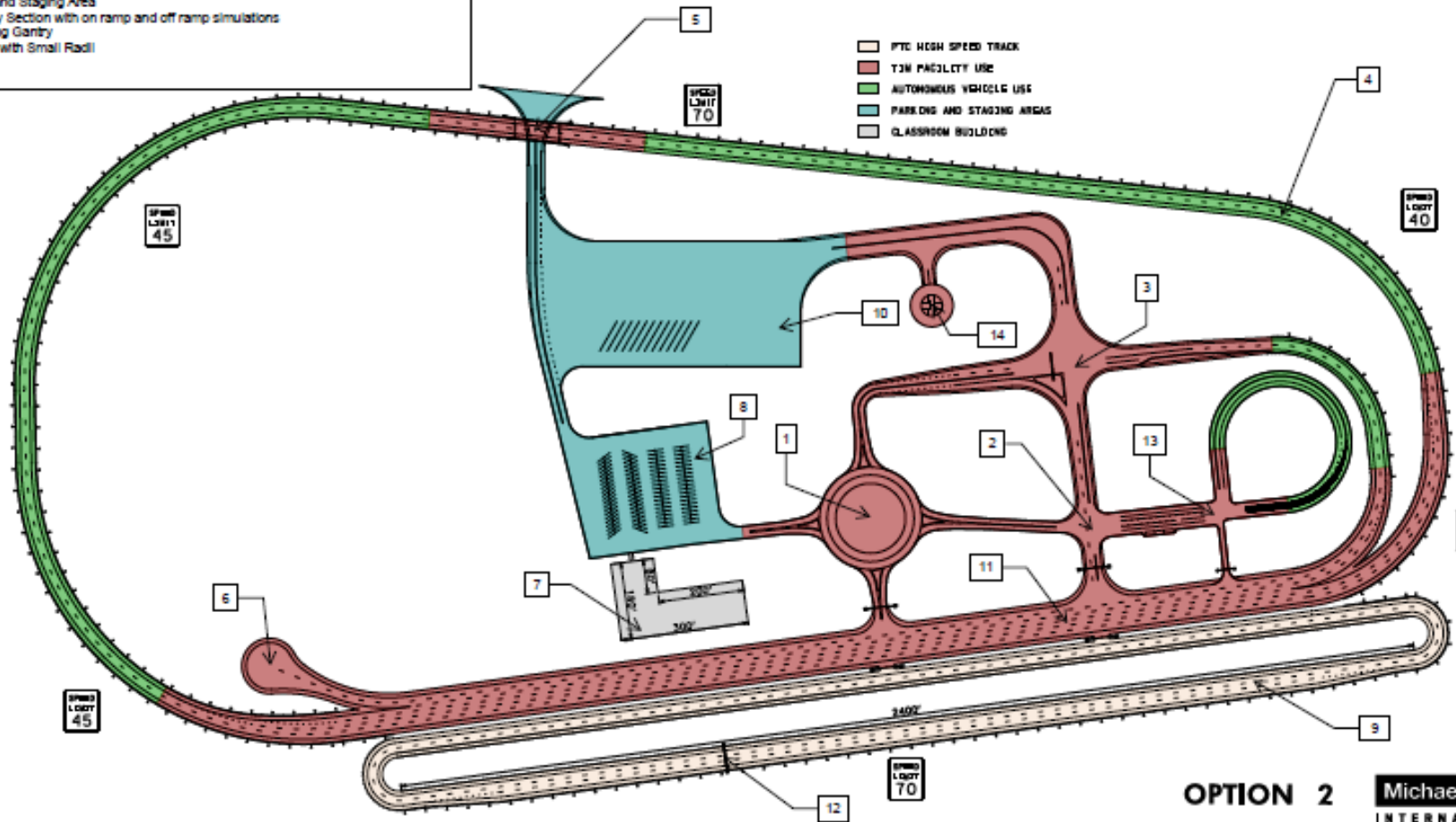


MID-ATLANTIC TIM TRAINING FACILITY STUDY

1. 4 Point Roundabout with area for Green Space
2. Rural Intersections
3. Urban 4 Point Intersection (Leg 1 Simulates Multilane through with Left turn lane, Leg 2 Simulates Multilane through with right turn only, Leg 3 Simulates Left turn and Right turn only with concrete island and signal, Leg 4 Simulates a Typical Intersection layout with left turn into a rural intersection.)
4. Potential Automation Test Loop (Will Have sections to simulate Type 31-6 guide rail, Cable systems, and Concrete Jersey Barrier.)
5. Typical Bridge Section with embankments
6. Truck Turnaround area
7. Building for Classrooms
8. Parking Lot Currently Showing 160 spaces
9. High Speed Testing with Return Loop
10. Truck Parking and Staging Area
11. 6 Lane Highway Section with on ramp and off ramp simulations
12. Overhead Tolling Gantry
13. City Simulation with Small Radii
14. Helipad

PROJECT	COUNTY	ROUTE	SECTION	SHEET
X-X	XXXX	XXXX	XXX	OF XX
REVISION		DATE	BY	

-  PTC HIGH SPEED TRACK
-  TIM FACILITY USE
-  AUTOMOBILE VEHICLE USE
-  PARKING AND STAGING AREAS
-  CLASSROOM BUILDING



OPTION 2
110 Acre Site

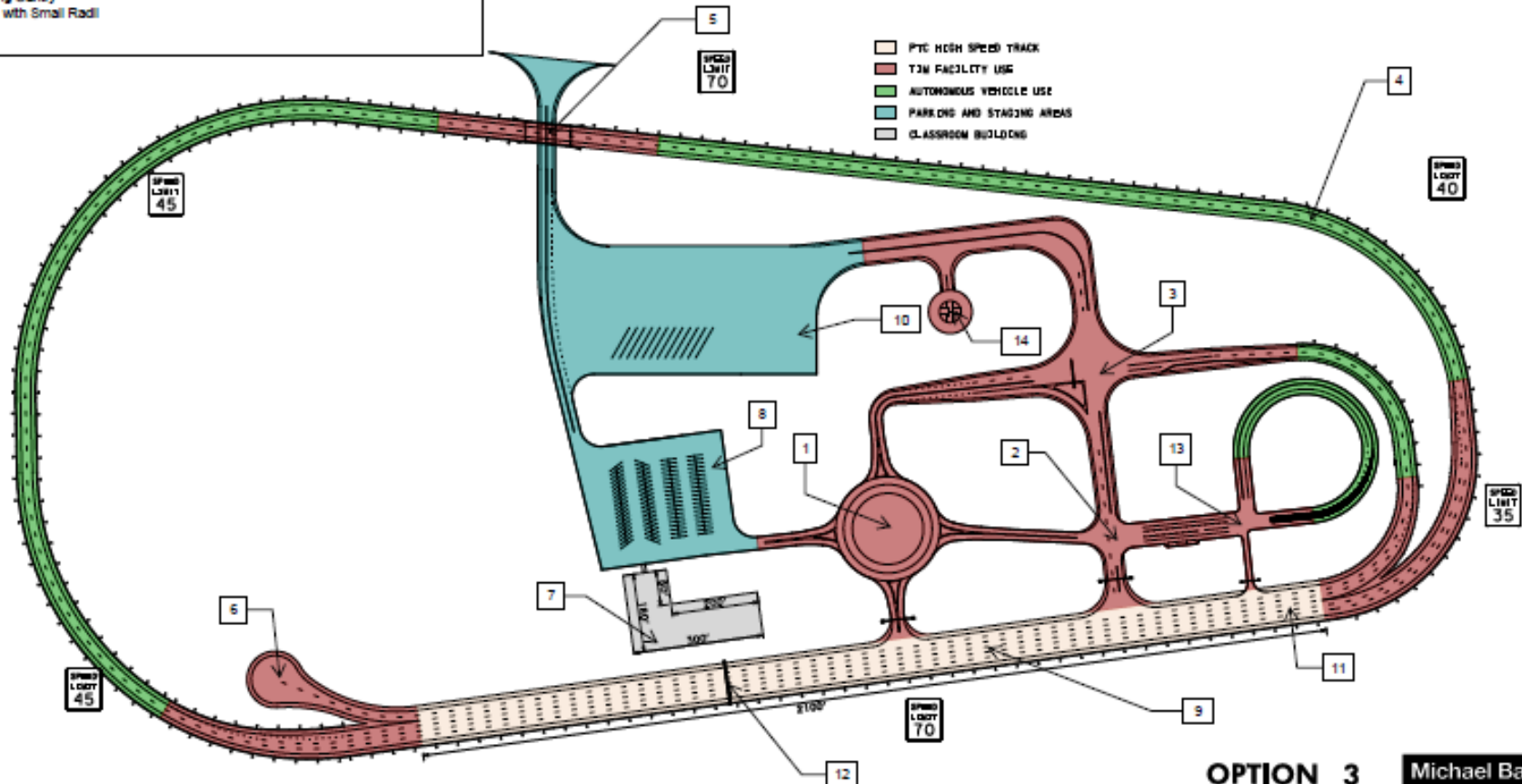
Michael Baker
INTERNATIONAL

443 NORTH FRONT STREET
SECOND FLOOR
HARRISBURG, PA. 17106-2138

MID-ATLANTIC TIM TRAINING FACILITY STUDY

1. 4 Point Roundabout with area for Green Space
2. Rural Intersections
3. Urban 4 Point Intersection (Leg 1 Simulates Multilane through with Left turn lane, Leg 2 Simulates Multilane through with right turn only, Leg 3 Simulates Left turn and Right turn only with concrete island and signal, Leg 4 Simulates a Typical Intersection layout with left turn into a rural intersection.)
4. Potential Automation Test Loop (Will Have sections to simulate Type 31-6 guide rail, Cable systems, and Concrete Jersey Barrier.)
5. Typical Bridge Section with embankments
6. Truck Turnaround area
7. Building for Classrooms
8. Parking Lot Currently Showing 160 spaces
9. High Speed Testing with Return Loop
10. Truck Parking and Staging Area
11. 6 Lane Highway Section with on ramp and off ramp simulations
12. Overhead Tolling Gantry
13. City Simulation with Small Radii
14. Helipad

PROJECT	COUNTY	ROUTE	SECTION	SHEET
8-8	YOKEE	XXXX	XXX	OF XX
XXXXXXXXXX				
DESIGN	DRAWING			DATE
BY				BY
DATE				DATE



OPTION 3
110 Acre Site

Michael Baker
INTERNATIONAL

441 NORTH FRONT STREET
SECOND FLOOR
HARRISBURG, PA. 17104-7108

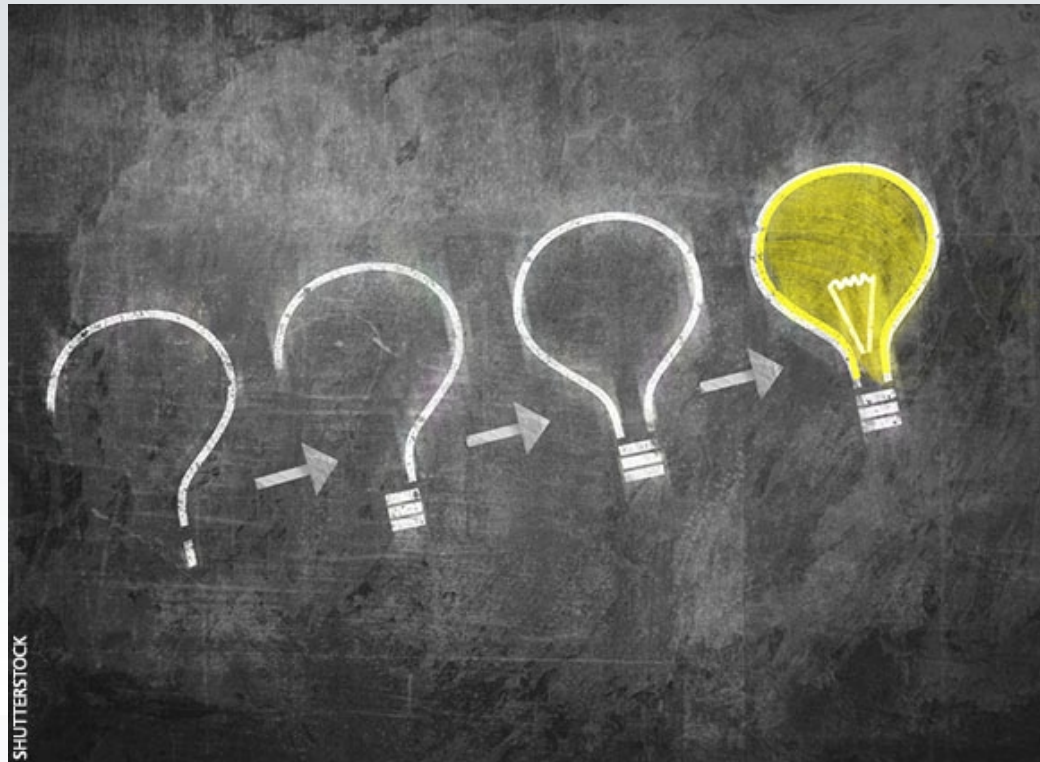
KEY NEXT STEPS



MILESTONE SCHEDULE

Step	Target
Outreach Engagement	Spring/Summer 2017
Feasibility Study/Business Plan	Fall 2017/Winter 2018
Site Selection Due Diligence Development	Spring 2018
Request for Proposals	Summer 2018

Questions?



Contact Information

Joseph Sutor, P.E., Planning Manger
Pennsylvania Turnpike Commission

jsutor@paturndpike.com

717-831-7247

Troy D. Truax, AICP
Michael Baker International

Troy.Truax@mbakerintl.com

717-213-6241