

STAA Routes in PA



Matthew Hedge
Central Permit Office Manager
Hauling Permits Section
mhedge@pa.gov

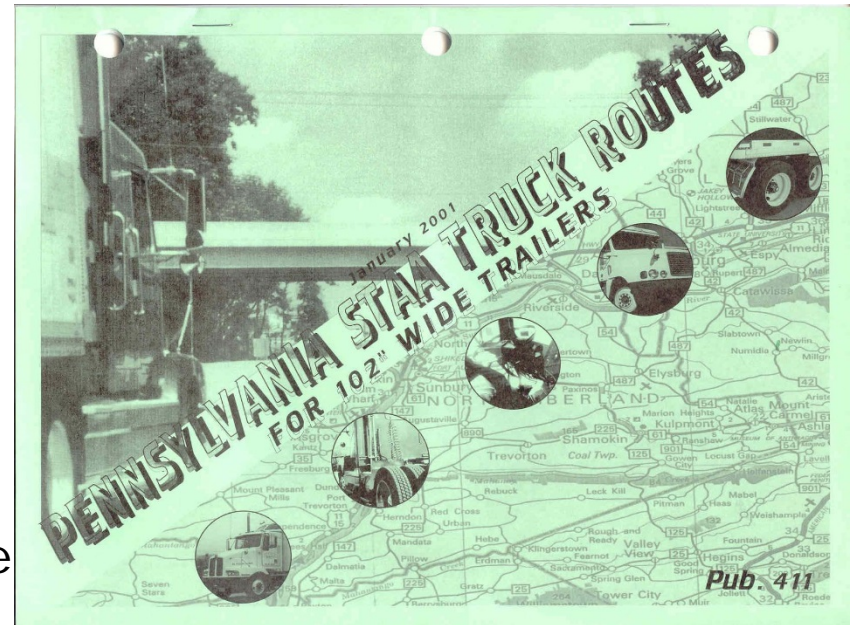
Summary

- STAA History
 - What trucks are STAA Trucks
 - Where can they go
- Why are all these trucks here
- What are we doing to restrict/allow them
- Residents don't care about reality. They just don't want trucks to move past their homes
- How GPS impacts the situation.
- The "Solution"

History

– The Surface Transportation Assistance Act of 1982

- Required states to allow 102" wide combinations to move on the interstates and other designated highways
- Must allow reasonable access to terminals
- Restricted areas within this network must be due to safety concerns
- TRB Special Report 223
 - 10' lanes acceptable on low volume low speed roads



Muddy the waters

- 102s exempt from STAA restrictions
 - Automobile and boat transporters
 - Furniture moving vans
 - Straight trucks and busses
 - Combinations with trailers no greater than 28'6" long
 - Utility trailers registered at 10,000lbs or less



More Mud

LIST 1

102" wide - 53', 48', twin and maxi-cube trailers

Routes available for 102" wide single trailer, maxi-cubes, and two trailer combinations. Maximum trailer length for single trailer combinations is 53'. Maximum trailer length for trailers in two trailer combinations is 28 ½' each. Access is permitted up to one (1) mile off this list to terminals, for fuel, food, or lodging if the route has 10' wide travel lanes.

LIST 2A

102" wide - 53', 48', twin and maxi-cube trailers

Routes available for 102" wide single trailer, maxi-cubes, and two trailer combinations. Maximum trailer length for single trailer combinations is 53'. Maximum trailer length for trailers in two trailer combinations is 28 ½' each. Access is permitted up to ½ mile off this list to terminals, for fuel, food, or lodging if the route has 10' wide travel lanes. This list should be used in conjunction with LIST 1.

LIST 2B

102" wide - 53', 48', twin and maxi-cube trailers

Routes available for 102" wide single trailer, maxi-cubes, and two trailer combinations. Maximum trailer length for single trailer combinations is 53'. Maximum trailer length for trailers in two trailer combinations is 28 ½' each. Access Approval is necessary to leave these Routes. This list should be used in conjunction with LIST 1.

LIST 3

102" wide - 48', twin and maxi-cube trailers

Routes available for 102" wide single trailer, maxi-cubes, and two trailer combinations. Maximum trailer length for single trailer combinations is 48'. Maximum trailer length for trailers in two trailer combinations is 28 ½' each. Access Approval is necessary to leave these Routes. This list should be used in conjunction with LISTS 1 and 2.

LIST 8

SIGNED PROHIBITED ROUTES

Signs prohibit 102" wide - 53', 48' and twin trailers

Exceptions are noted in brackets after the route description.

102" wide - 28.5 foot single trailers, 102" wide - straight body trucks and 96" wide - 53' and 48' trailers are allowed on these routes.

LIST 4

102" wide - twin trailers

Routes available for 102" wide two trailer combinations. Maximum trailer length for trailers in two trailer combinations is 28 ½' each. Access Approval is necessary to leave these approved Routes. This list should be used in conjunction with LISTS 1, 2 and 3.

LIST 5

102" wide - 53' and 48' trailers

Routes available for 102" wide single trailer with maximum trailer length for single trailer combination of 53'.
NO TWIN TRAILERS PERMITTED ON THESE ROUTES.
Access Approval is necessary to leave these approved Routes. This list should be used in conjunction with LISTS 1 and 2.

LIST 6

102" wide - 48' trailers

Routes available for 102" wide single trailer with maximum trailer length for single trailer combination of 48 feet.
NO TWIN TRAILERS PERMITTED ON THESE ROUTES.
Access approval is necessary to leave these approved Routes. This listing should be used in conjunction with LISTS 1,2,3 and 4.

LIST 7A, B & C

Routes available to the size trailer identified in the following PARTS.
Access approval is necessary to leave these approved Routes.
PART A - 102" wide Maxi Cubes
PART B - 102" wide 45 foot long trailers
PART C - 96" wide 28 1/2' long twin trailer combinations

- The list designates the vehicle type and the distance off the network trucks are allowed to travel
- So even if a 102 is allowed to use the road, it may not necessarily be the 102 that the trucker is driving.



pennsylvania

DEPARTMENT OF TRANSPORTATION

www.dot.state.pa.us

CHESTER COUNTY

STAA TRUCK ROUTES

NATIONAL NETWORK

Interstate and Other 4 Lane Routes

PENNSYLVANIA ACCESS APPROVED ROUTES

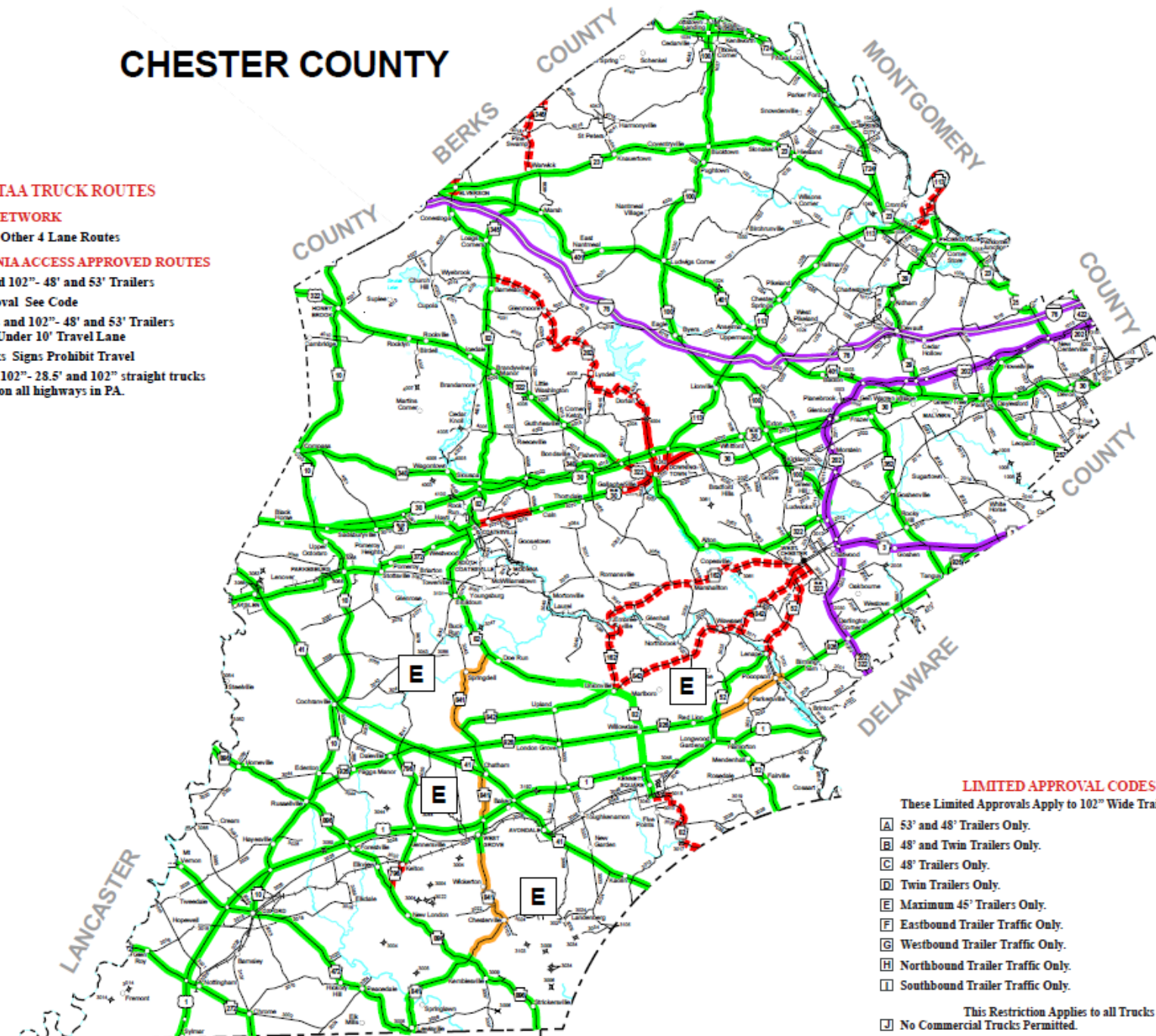
102" Twins and 102"- 48' and 53' Trailers

Limited Approval See Code

No 102" Twins and 102"- 48' and 53' Trailers
Allowed Under 10' Travel Lane

..... No 102" Trucks Signs Prohibit Travel

NOTE: Single 102"- 28.5' and 102" straight trucks
are permitted on all highways in PA.



LIMITED APPROVAL CODES

These Limited Approvals Apply to 102" Wide Trailers Only.

- A 53' and 48' Trailers Only.
- B 48' and Twin Trailers Only.
- C 48' Trailers Only.
- D Twin Trailers Only.
- E Maximum 45' Trailers Only.
- F Eastbound Trailer Traffic Only.
- G Westbound Trailer Traffic Only.
- H Northbound Trailer Traffic Only.
- I Southbound Trailer Traffic Only.

This Restriction Applies to all Trucks

- J No Commercial Trucks Permitted.

ROUTE NUMBER	ROUTE DESCRIPTION	LIST NUMBER	ROUTE NUMBER	ROUTE DESCRIPTION	LIST NUMBER
I-76	PA Turnpike - From OH State Line (Lawrence Co) to NJ State Line (Philadelphia Co).	1	US 30 Bus	From PA 113 to US 30, 1.2 miles.	3
US 202	From the DE State Line(Delaware Co) to I-76 PA Turnpike (Exit 326, Montgomery Co).	1	US 202 Off Ramp	From US 202 to Swedesford Road (SR 1002), 0.3 miles.	3
PA 3	From US 202 to Garrett Road (Delaware Co).	1	SR 1002	Swedesford Road - From US 202 Ramp to PA 29, 0.5 miles.	3
US 30	Exton Bypass - From US 30 Business east of Downingtown to US 202.	2A	SR 2007	Westtown Road - From US 202 to Autopark Boulevard, 0.2 miles.	3
US 30	From PA 772 (Lancaster Co) to US 13(Philadelphia Co).	2A	SR 2020	Boot Road - From US 322 to the Pepperidge Farm Terminal, 1 mile.	3
US 30	From US 202 to US 13 (Philadelphia Co).	2A	SR 2020	Boot Road - From US 202 to Wilson Drive, 0.6 miles.	4
US 30 Bus	From SR 4005 to the Downingtown Borough Line at King Street	2A	LOCAL RD	Ackworth Station Road - From US 30 Business to Boot Road, 1.1 miles.	3
US 30 Bus	From US 30 to PA 82.	2A	LOCAL RD	Airport Road - From Wrights Lane to Ward Avenue, 0.2 miles.	3
US 322	From the PA 39/US 322/US 422 interchange (Dauphin Co) to US 30.	2A	LOCAL RD	Autopark Boulevard - From Westtown Road to Bolman Street, 0.3 miles.	3
US 422	From US 422 Business in Reiffton (Berks Co) to US 202 (Chester Co).	2A	LOCAL RD	Bolman Street - From Automall Boulevard to the terminal, 0.1 miles.	3
PA 10	From PA 472 to US 422 (Berks Co).	2A	LOCAL RD	Bridge Street - From PA 23 to PA 724, 2.3 miles.	3
PA 23	From PA 462 (Lancaster Co) to US 1 at the Philadelphia County Line (Montgomery Co).	2A	SR 1036	Pothouse Road - From PA 113 to 480 West Pothouse Road, Phoenixville, 0.8 miles.	4
PA 29	From PA 30 to SR 4031 at Main Street (Montgomery Co).	2A	LOCAL RD	Airport Road - From Wilson Drive to Ward Avenue, 0.1 miles.	4
PA 41	From the DE State Line to US 30 (Lancaster Co).	2A	LOCAL RD	Ward Avenue - From Airport Road to the terminal, 0.1 miles.	4
PA 82	From PA 401 to Cypress Street in Kennett Square, 27 miles.	2A	LOCAL RD	Whiteford Road - From US 30 to the Oaklands Corp. Center, 0.1 miles.	4
PA 100	From US 202 to PA 309(Lehigh Co).	2A	LOCAL RD	Wilson Drive - From Boot Road to Airport Road, 0.1 miles.	4
PA 113	From US 30 to PA 23.	2A	SR 3047	Union St. - From SR 3049 (Modena Rd.) to the Fabricated Metals Inc. Facility, 0.1 mi.	5
PA 162	From US 322 Business to Brookmeade Drive.	2A	SR 3049	Modena Road - From SR 3049 (S. First Avenue) to SR 3047 (Union Street), 1.7 miles.	5
PA 252	From PA 320 (Delaware Co) to PA 23 (Montgomery Co).	2A	SR 3049	South First Avenue - From US 30 Business to SR 3049 (Modena Road), 0.7 miles.	5
PA 272	From the MD State Line to US 222 (Berks Co).	2A	LOCAL RD	Central Avenue - From US 30 to Industrial Road, 0.1 miles.	5
PA 282	From Norwood Road to the Brandywine Machinery Co.	2A	LOCAL RD	Industrial Boulevard - From Central Avenue to N. Cedar Hollow Road, 0.8 miles.	5
PA 340	From PA 462 (Lancaster Co) to US 30 Business.	2A	LOCAL RD	Merideth Court - From SR 3047 (Union Street) to the Sealed Air Corp. Facility, 0.1 mi.	5
PA 345	From PA 82 to PA 23.	2A	SR 3033	Newark Road - From US 1 to the Modern Mushroom Plant, 0.2 miles.	6
PA 352	From US 13 (Delaware Co) to US 30.	2A	SR 3043	From PA 10 to the South Coatesville Scrap & Iron Co. Facility, 8.0 miles.	6
PA 372	From PA 10 to PA 82.	2A	LOCAL RD	Worthington Street - From Market Street to Gay Street, 0.1 miles.	6
PA 372	From the Lancaster County Line to the Servistar Facility.	2A	PA 52	From SR 3023 (Pocopson Road) to SR 2003 (High Street), 3.6 miles.	8
PA 401	From US 30 to SR 1003 (Phoenixville Pike).	2A	PA 82	From PA 23 to PA 401.	8
PA 472	From PA 841 to US 222 (Lancaster Co).	2A	PA 82	From US 1 to DE State Line.	8
PA 724	From PA 23 to US 422 in Sinking Spring (Berks Co).	2A	PA 113	From Bridge Street to SR 4015 (Second Ave).	8
PA 796	From SR 3022 to PA 41.	2A	PA 162	From PA 82 to Brookmeade Drive.	8
PA 841	From PA 41 to PA 842.	2A	PA 282	From the Brandywine Machine Co. to PA 82.	8
PA 841	From the MD State Line to PA 896.	2A	PA 345	From PA 23 to the Berks County Line.	8
PA 841	From US 1 to T389 (State Road).	2A	PA 372	From Limestone Road to PA 10.	8
PA 842	From PA 841 to PA 82.	2A	PA 841	From PA 842 to PA 82. [45' ONLY PERMITTED]	8
PA 896	From the MD State Line to the Lancaster County Line.	2A	PA 841	From PA 896 to State Road. [45' ONLY PERMITTED]	8
PA 926	From PA 10 to PA 52.	2A	PA 841	From US 1 to PA 41. [45' ONLY PERMITTED]	8
PA 926	From SR 3023 to PA 3.	2A	PA 842	From PA 82 to PA 100 (High Street).	8
PA 52	From the Delaware state line to US 1, 3.0 miles	2B	PA 926	From PA 52 to SR 3023. [TWINS & 45' ONLY PERMITTED]	8
PA 52	From US 1 to SR 3023 (Pocopson Road), 4.2 miles.	2B	SR 4005	Cedar Knoll Road - From Manor Road (PA 82) to Hibernia Road (SR 4009), 0.8 miles.	8
SR 2020	From US 322 to SR 3061 (Quarry Road), 1.9 miles.	2B	SR 4009	Hibernia Road - From Cedar Knoll Road (SR 4005) to Wagontown Road, 1.4 miles.	8
SR 3013	Kaolin Rd./S. Union St. - From Meadowview Ln. to the Phillips Mushroom Farm, 0.5 mi.	2B	SR 4025	Chestnut Tree Road - From Manor Road (PA 82) to Horsehoe Pike (PA 322), 5 miles.	8
SR 3036	Old Kennett Road - From SR 3013 to the Phillips Mushroom Farm, 0.4 miles.	2B	LOCAL RD	Wagontown Road - From Kings Hwy (PA 340) to Martins Comer Road, 2.7 miles.	8
SR 3046	Old Baltimore Pike (local Cypress St. and State St. through Kennett Square borough) - From PA 41 to US 1, 5.7 miles.	2B			
SR 3061	From SR 2020 (Boot Road) to US 30 Business, 1.0 miles.	2B			
LOCAL RD	Broad Street - From Cypress Street to State Street, 0.1 miles.	2B			
LOCAL RD	Chambers Rd. (T-438) - From SR 3046 to Manfredi's Cold Storage Terminal, 0.1 miles.	2B			
LOCAL RD	Norwood Road - From US 30 Bypass to PA 282, 0.2 miles.	2B			
LOCAL RD	Rose Hill Road - From SR 3004 (State Road) to the Conard-Pyle Facility, 0.5 miles.	2B			
LOCAL RD	State Road - From PA 841 to Rose Hill Road, 0.9 miles.	2B			
LOCAL RD	S. Union St. - From PA 82 (South St.) to Meadowview Ln, 0.3 miles.	2B			

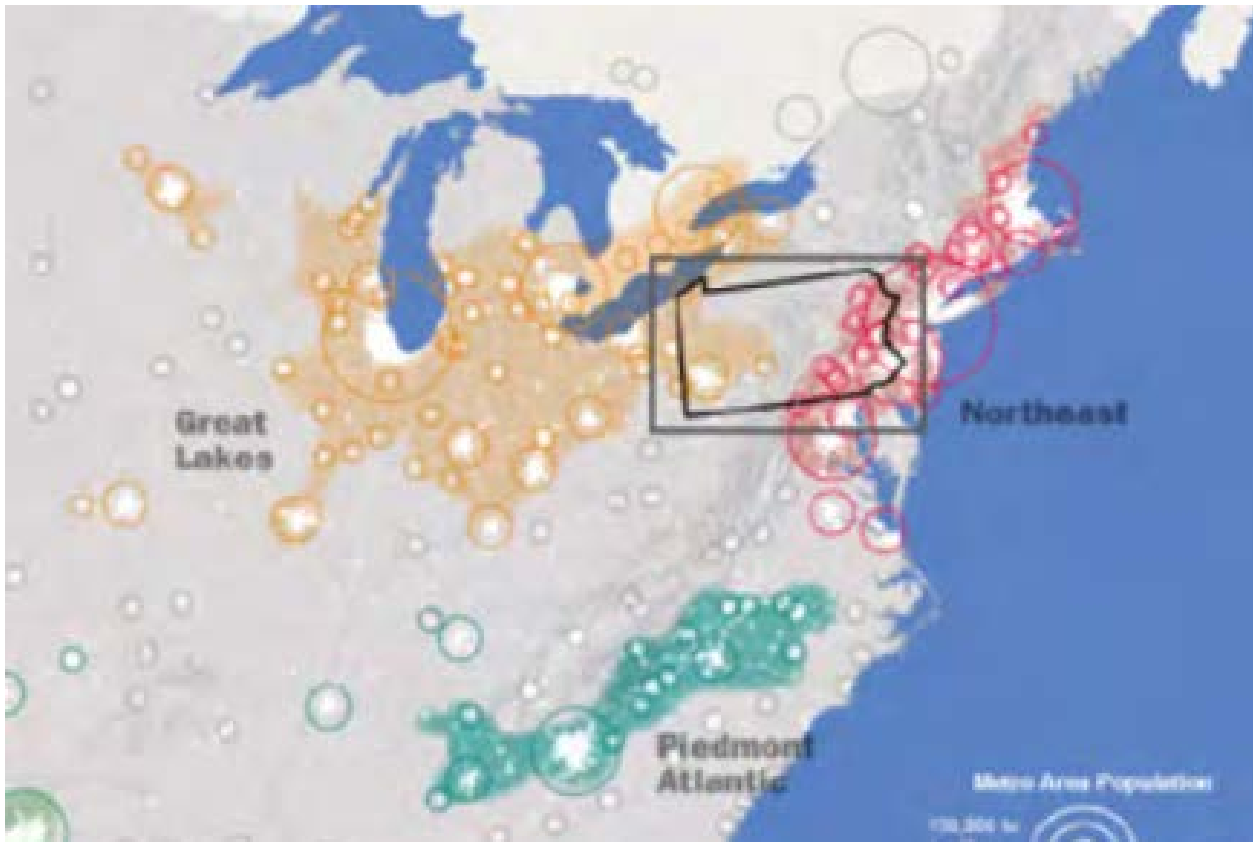


pennsylvania

DEPARTMENT OF TRANSPORTATION

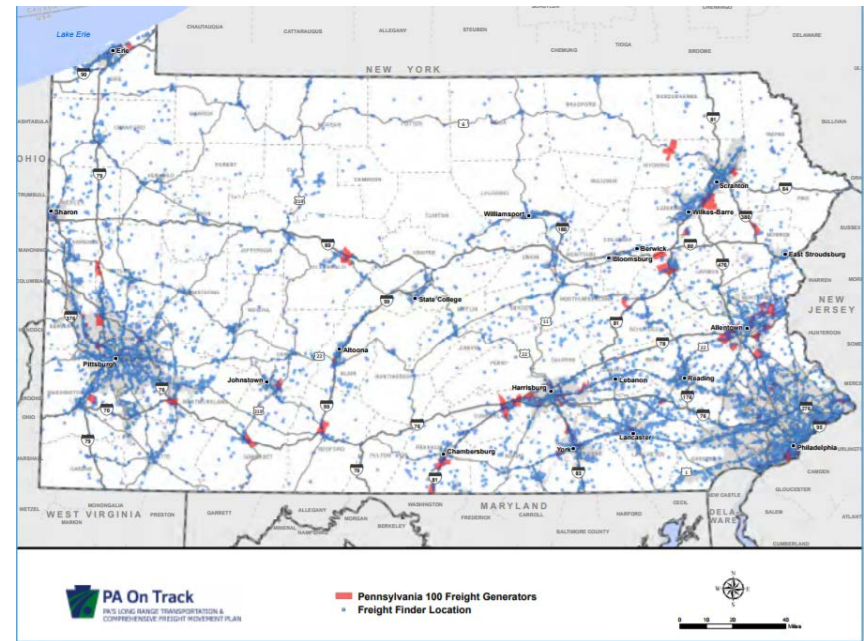
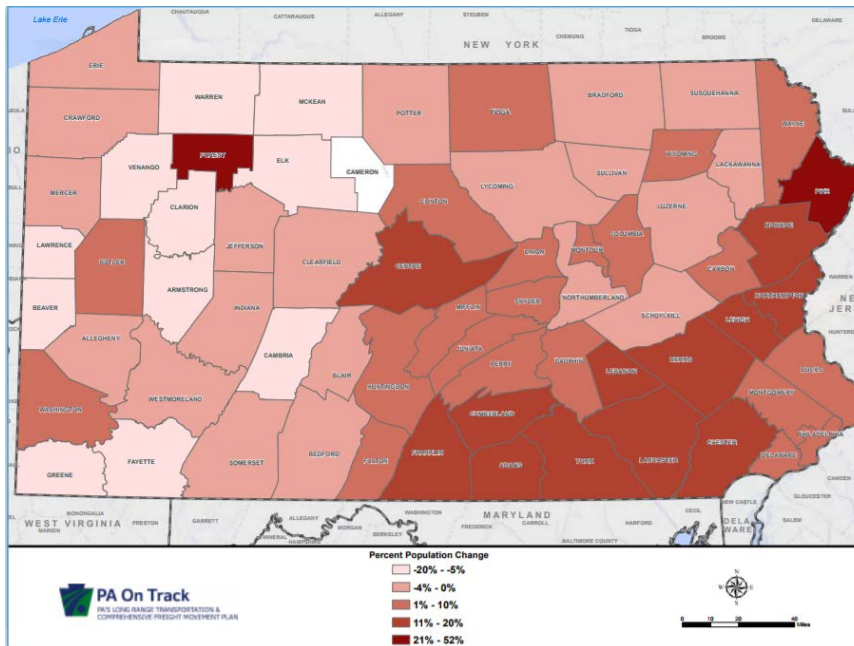
www.dot.state.pa.us

Why are all these trucks here?



- PA is less than a days drive to
 - 3 different Megaregions
 - 40% of the US population and
 - 50% of the Canadian population.

Population and Freight



- Population growing in the east
- Top 100 Freight generators not surprisingly along the interstates.

What are we doing to restrict trucks?



- 4902(a) Restrictions based on conditions of the bridge or road.
 - \$75 and/or
 - If over posted weight - \$150 plus \$150 per 500lbs in excess of 3000lbs over posted weight.



More Strategies



- 4902(b)
Restrictions
based on traffic
condition
 - \$500 Fine

Loophole

- Section 4908 refers to Section 4923(b)(6)&(7)
- Section 4923(b) was deleted so any citations written for 102s in violation of 4908 can be thrown out



Residents don't care about Reality...



- Local residents concerned with traffic at intersection

The problem Example #1

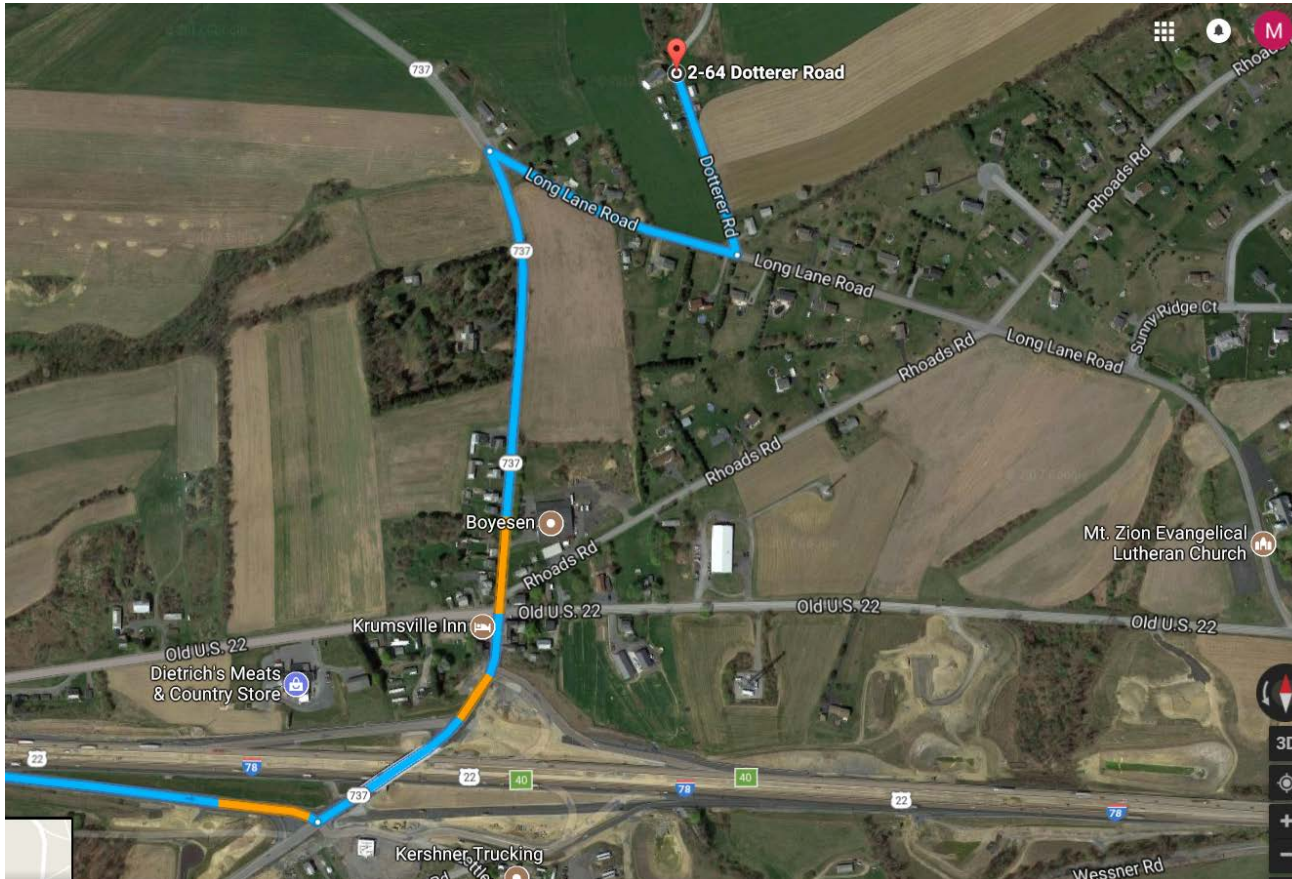


- Krumsville is zoned commercial
- The plan for this area is to have a significant level of truck traffic

- The terminal generating the truck traffic is in a different municipality than the road providing access.
- Who is responsible for maintaining the road



The GPS effect

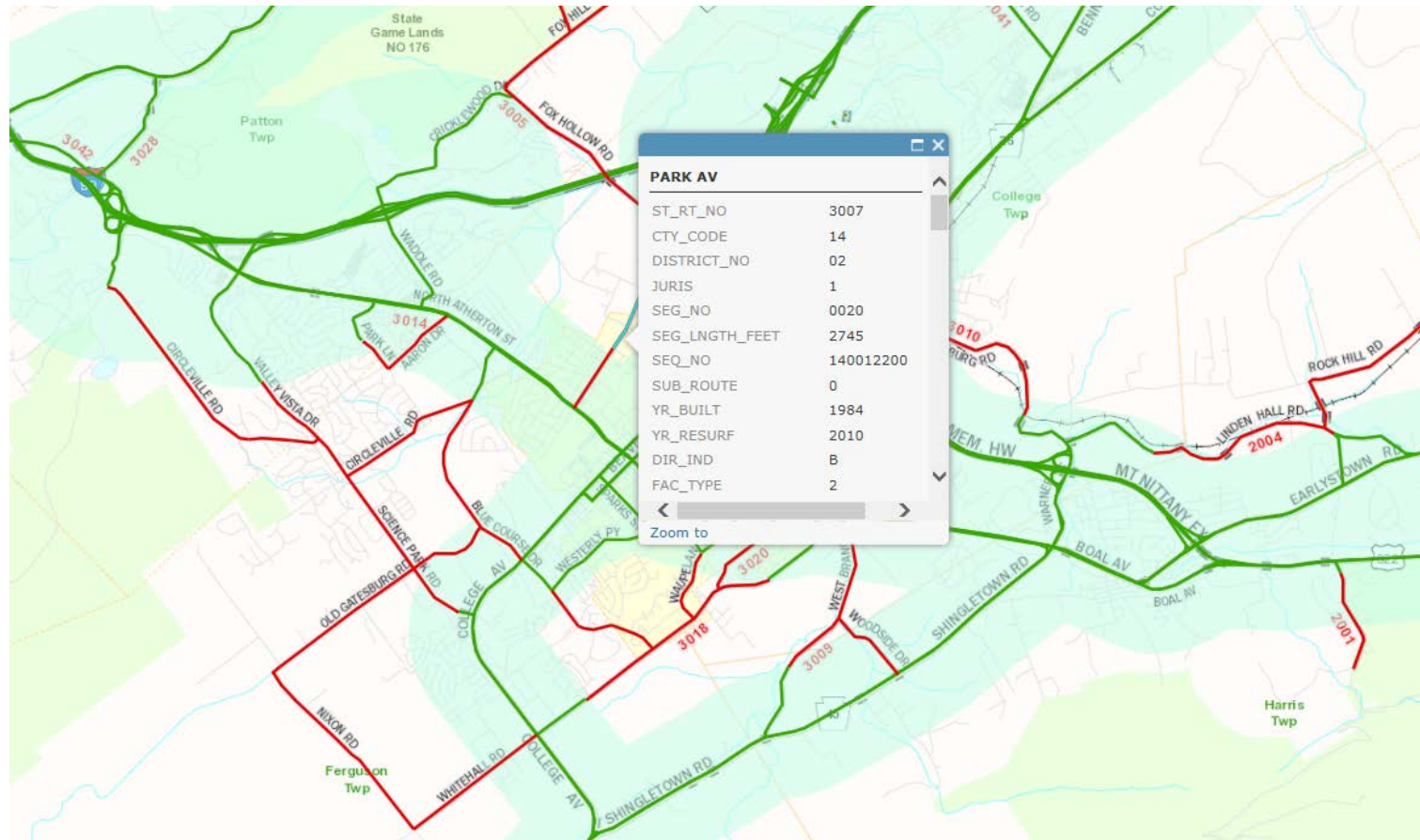


- GPS route VS truck route
 - GPS does not consider turning radius
 - GPS does not consider land use

New Legislation

- Change the legal width of vehicles to 102"
 - No more invisible truck restrictions
 - The Department must sign those locations where truck movement is not safe.
 - Eliminate Pub 411
 - Delete Chapter 209
 - Create an online map showing restricted routes
- Provide guidance to locals
 - Restriction must be due to safety
 - Revise access forms to be Restriction Forms
 - Locals are responsible for ramifications of Planning decisions.

Guidance for Districts



Contacts



Matthew Hedge
Central Permit Office Manager
Hauling Permits Section
mhedge@pa.gov

George Harpster
Central Permit Office
Supervisor
Hauling Permits Section
gharpster@pa.gov